



AZIMUT

AZIMUT EXPLORATION INC.

Predictive Modelling That Works

AZM:TSX-V



URANIUM

1. North Rae
2. Daniel Lake
3. Kangiq
4. Burrel Lake
5. Tasirlaq
6. South Rae
7. North Minto
8. Central Minto
9. South Minto
10. West Minto
11. Hudson Bay
12. Vernot Lake
13. South Bienville
14. Kativik



GOLD

1. Opinaca A
2. Opinaca B
3. Eleonore South
4. Opinaca D
5. Wabamisk
6. Masta



REE-COPPER

1. Rex
2. Diana



CHROMIUM-PGE

1. Eastmain West

REE = rare earth elements
PGE = platinum group elements

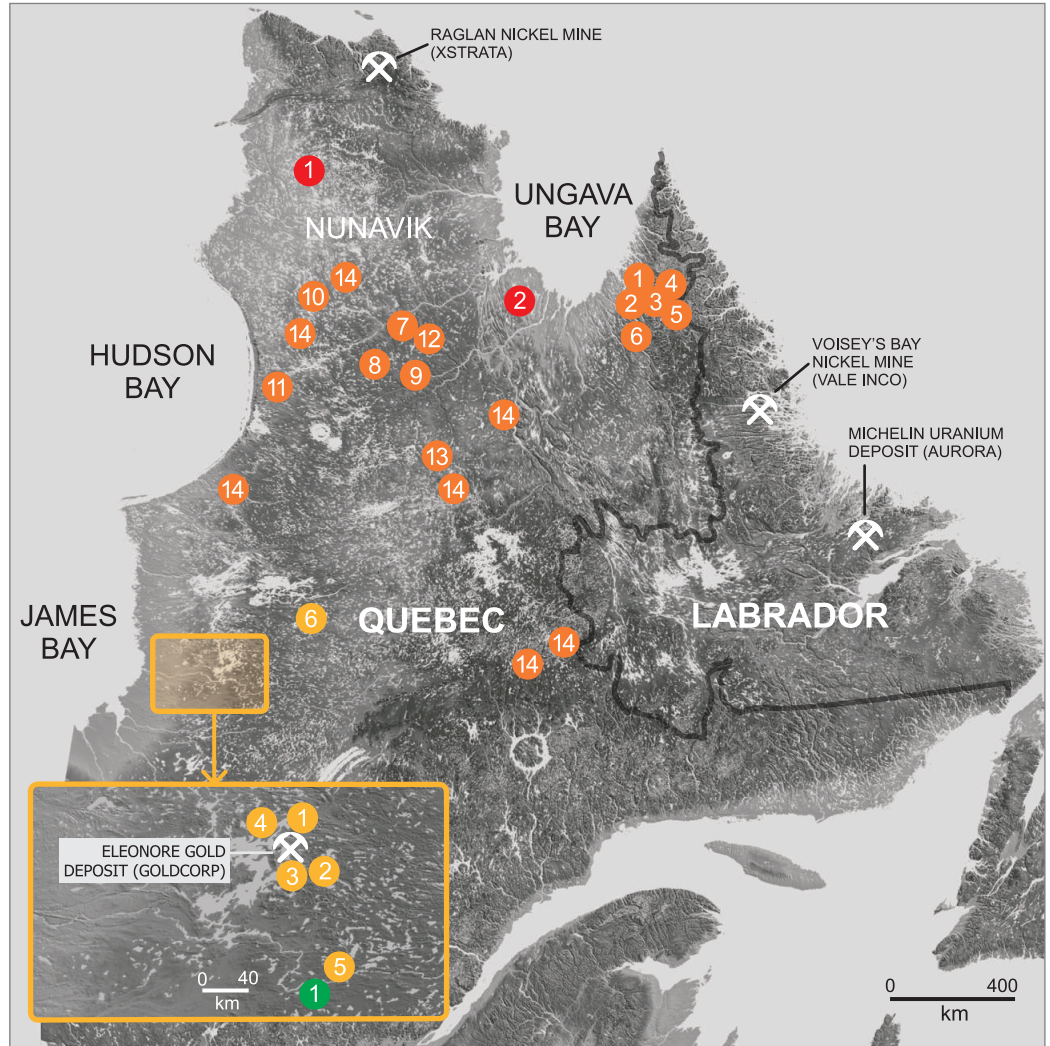
KEY FACTS

- 23 properties
- Largest claim holder in Quebec (20,000 claims, 9% of provincial total)
- 11 partnership agreements
- Minimum \$4.5 M for exploration in 2010
- >200 prospects discovered in 5 years (validation of targeting methodology)

FINANCIAL DATA

(as at Dec. 31, 2009)

- Issued shares: 24.6 million
- Insiders: 10 %
- Cash and shares: \$4.3 million
- 12-mo. trading range: \$0.30-\$0.92
- Large institutional shareholders



CORPORATE STRATEGY

Azimut is a publicly traded Canadian exploration company specializing in regional-scale mineral potential assessments to discover major deposits. This targeting capability is used to reduce the technical risk at the initial exploration stage, and to develop partnerships, which in turn reduces the business risk. This approach offers a highly competitive solution for the Company and its partners. Azimut is one of the most active exploration companies in the mining-friendly province of Quebec. Although Quebec has been the main focus so far, other regions around the world are considered.

TECHNICAL LEVERAGE

We believe that the quality of initial targeting is the most critical factor for success in mineral exploration. An effective targeting methodology must be able to identify and retain only the very best targets, thus enhancing the probability of making economic discoveries. To accomplish this, we process large geoscience databases using cutting-edge, proprietary, GIS-based predictive tools. Targets are further validated using the considerable exploration know-how of Azimut's team. The methodology is applicable to a range of commodities and mineral deposit types, and can be used worldwide wherever adequate regional-scale databases exist.

HIGHLIGHTS

- ➔ **URANIUM:** Discovery of a new uranium district in northern Quebec
- ➔ **RARE EARTHS - COPPER:** Giant IOCG footprint recognized at Rex property: one of the strongest and largest REE-Cu anomalies in lake-bottom sediments in Quebec and Labrador
- ➔ **GOLD:** Strategic land holdings in the Eleonore gold deposit area of Quebec



MANAGEMENT AND DIRECTORS

Jean-Marc Lulin, P.Geo., Ph.D.

President, CEO and Director

A senior mining executive with 29 years of experience in North America, Africa and Europe. Dr. Lulin designed the mineral potential targeting methodology that constitutes the cornerstone of Azimut's activity. Prior engagements include President, COO and Director for Channel Resources, Chief Geologist for SOQUEM and the Vior-Mazarin Group, and Geologist for the BRGM.

Dennis Wood, O.C.

Chairman of the Board

Highly respected self-directed venture capitalist with more than 30 years experience as manager and board member for many large American and Canadian companies.

Moniroth Lim, C.G.A.

Secretary Treasurer

A highly experienced financial and auditing professional with more than 20 years of experience. Ms. Lim's area of expertise includes the preparation of statutory reports for publicly traded mining companies, equity financing, management of financial audits, and review of internal controls.

Normand Champigny, P.Eng., M.A.Sc.

Senior Consultant

A geological engineer with 29 years of international experience in the mining industry, who has worked with leading consulting organizations on a wide range of mining projects.

Jean-Charles Potvin, MBA, B.Sc.

Director

Chief executive and director of several public natural resource companies operating in Canada and internationally. Mr. Potvin has evaluated and secured financing for many mining investment opportunities around the world.

Louis P. Salley, B.A., LL.B.

Director

Senior barrister and solicitor with more than 30 years of Canadian and international practice, currently focusing on the mining and oil & gas sectors.

Pierre Toth, M.Sc.

Director

Business administration professor and equity fund advisor specializing in the clean technology and renewable energy sectors, also serving as senior financial officer for several large Canadian corporations.

CONTACT

Jean-Marc Lulin
President and CEO

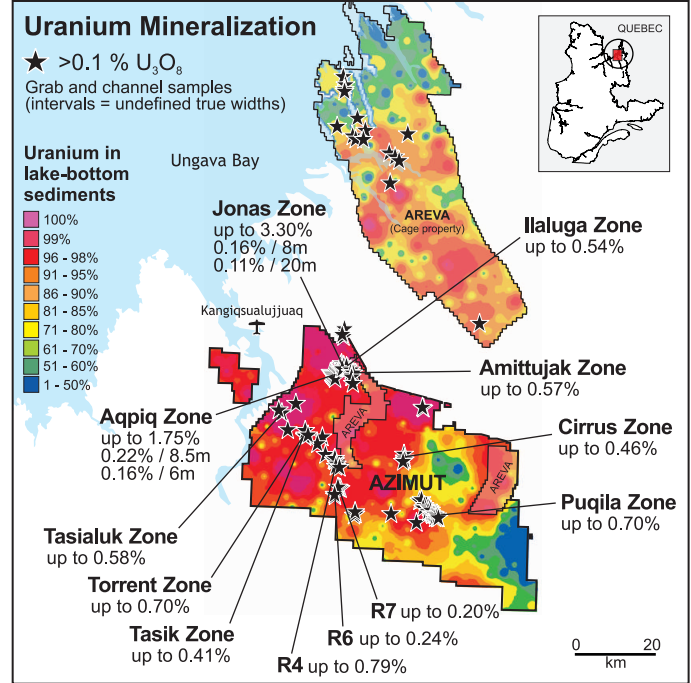
Telephone: +1 (450) 646-3015
Fax: +1 (450) 646-3045

Azimut Exploration Inc.
110 De La Barre Street, suite 214
Longueuil (Quebec)
Canada J4K 1A3

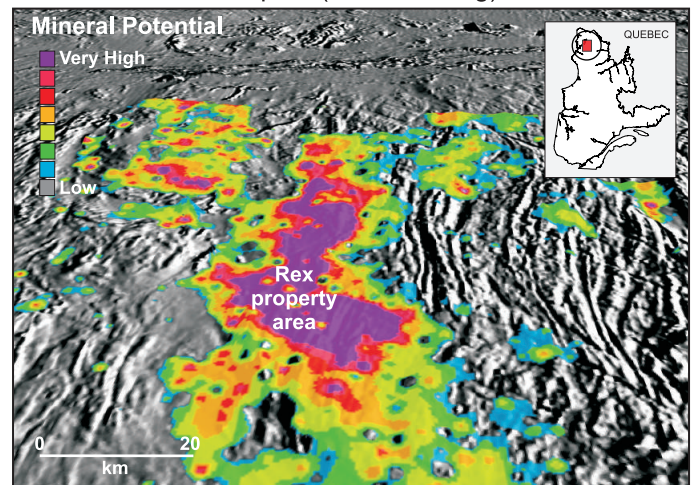
info@azimut-exploration.com
www.azimut-exploration.com

Fact sheet last updated: March 2010

➔ URANIUM Ungava Bay Region, Quebec Discovery of a new uranium district



➔ RARE EARTHS - COPPER Northern Quebec Giant IOCG footprint (>100 km long)



➔ GOLD James Bay Region, Quebec Eleonore gold deposit area

